



SUMAN EDUCATION SOCIETY'S

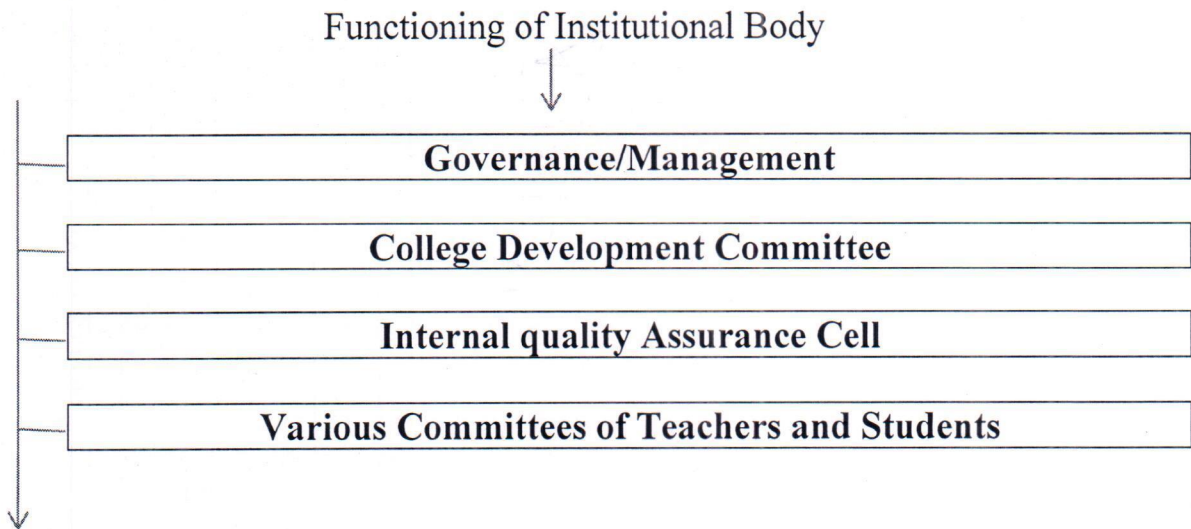
LN COLLEGE (Night)

(Affiliated to the University of Mumbai)

H. D. Gaonkar Vidya Sankul, Suman Education Society Campus, Plot No. 89, Near General Kariappa Bridge, Rajendra Nagar, Borivali (East), Mumbai - 400 066, Maharashtra (India)

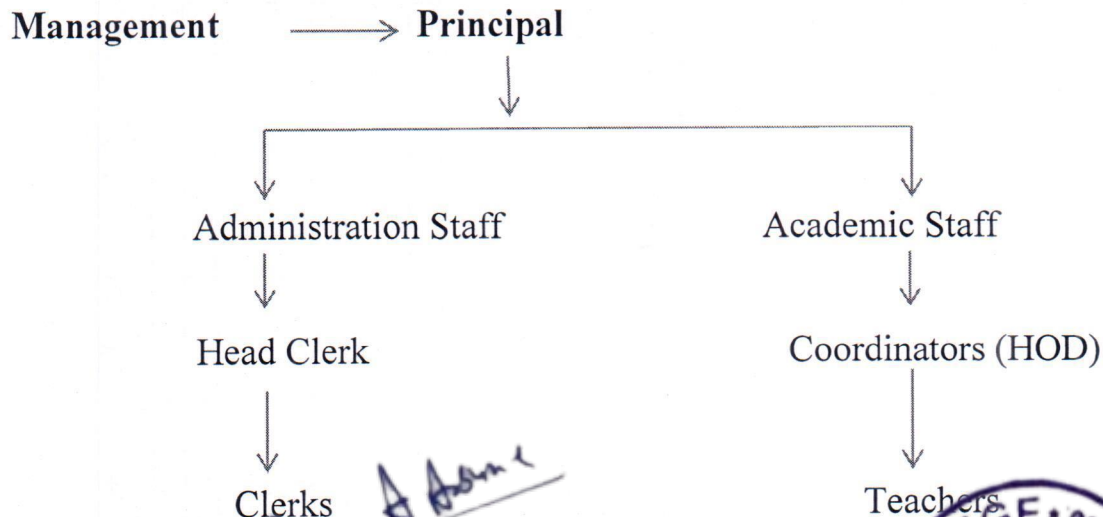
6.2.1 The functioning of the institutional bodies is effective and efficient as visible from policies, administrative setup, appointment and service rules, procedures, deployment of institutional Strategic/ perspective/development plan etc.

6.2.1 A Functioning of Institutional Body



Effective, Efficient and Functioning

6.2.1 B Functioning of Institutional Body



Rashmi A. Dhanu
I/C Principal
LN College
Plot No. 89, Near General Kariappa Bridge,
Rajendra Nagar, Borivali (East), Mumbai - 400 066





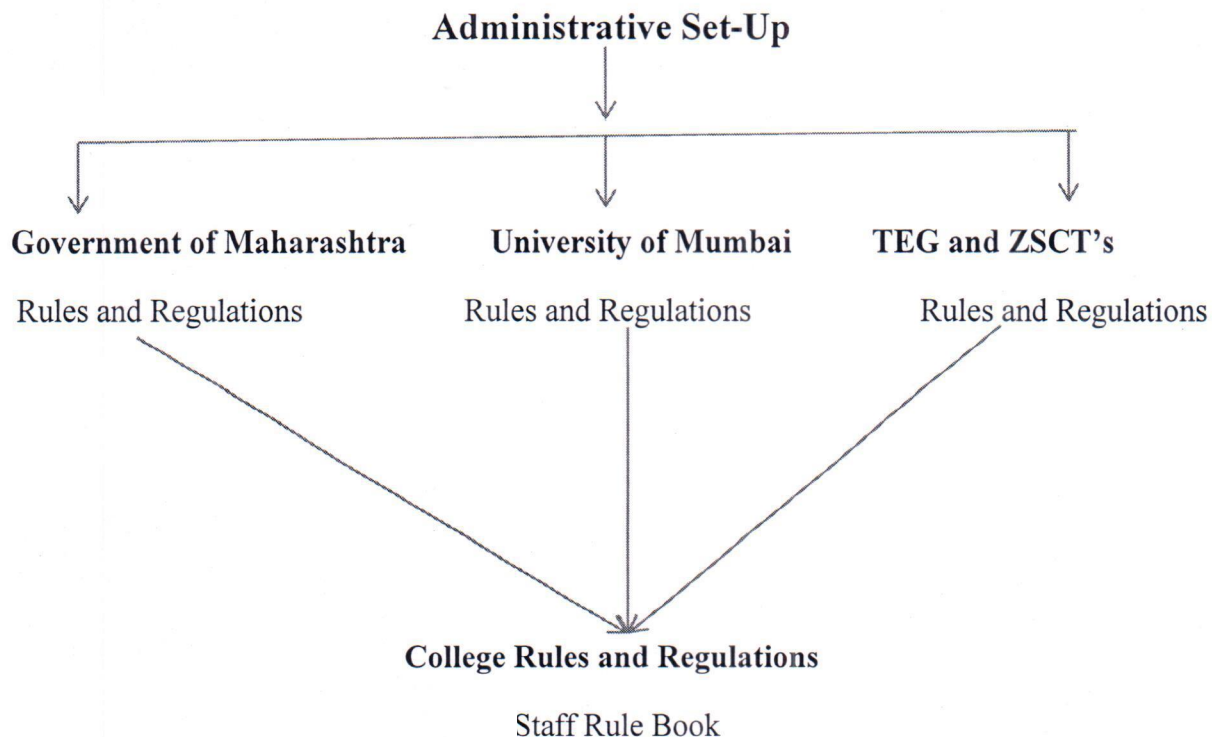
SUMAN EDUCATION SOCIETY'S

LN COLLEGE (Night)

(Affiliated to the University of Mumbai)

H. D. Gaonkar Vidya Sankul, Suman Education Society Campus, Plot No. 89, Near General Kariappa Bridge,
Rajendra Nagar, Borivali (East), Mumbai - 400 066, Maharashtra (India)

6.2.1 C Functioning of Institutional Body



Reeta A. Dhanu

I/C Principal
LN College

Plot No. 89, Near General Kariappa Bridge,
Rajendra Nagar, Borivali (East), Mumbai - 400 066

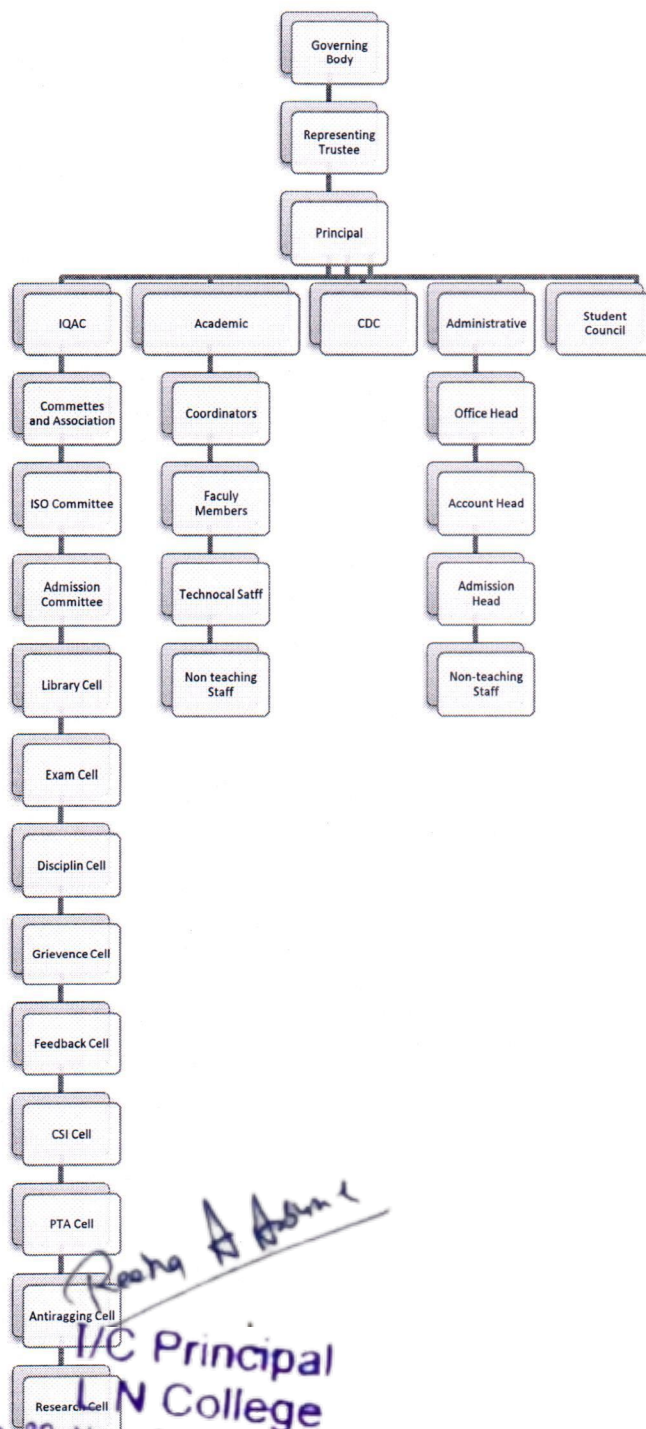




SUMAN EDUCATION SOCIETY'S
LN COLLEGE (Night)
(Affiliated to the University of Mumbai)

H. D. Gaonkar Vidya Sankul, Suman Education Society Campus, Plot No. 89, Near General Kariappa Bridge,
Rajendra Nagar, Borivali (East), Mumbai - 400 066, Maharashtra (India)

6.2.1 The functioning of the institutional bodies is effective and efficient as visible from policies, administrative setup, appointment and service rules, procedures, deployment of institutional Strategic/ perspective/development plan etc.



Reena A. Adani
I/C Principal
LN College
Plot No. 89, Near General Kariappa Bridge,
Rajendra Nagar, Borivali (East), Mumbai - 400 066





SUMAN EDUCATION SOCIETY'S

LN COLLEGE (Night)

(Affiliated to the University of Mumbai)

H. D. Gaonkar Vidya Sankul, Suman Education Society Campus, Plot No. 89, Near General Kariappa Bridge, Rajendra Nagar, Borivali (East), Mumbai - 400 066, Maharashtra (India)

Criteria 6.2.1

The functioning of the institutional bodies is effective and efficient as visible from policies, administrative setup, appointment and service rules, procedures, deployment of institutional strategic/ perspective/development plan etc.

Organizational structure:

The **Organizational Structure** of the College consists of the Management, Governing body, the Principal, the teaching staff, the non-teaching staff and the students. The Management of the College consists of the delegates of Suman Education Society's LN College. the highest decision-making body which is in constant touch with the Principal on all matters pertaining to the smooth functioning of the institution. This is followed by the Governing Body of the College which meets at least thrice a year to discuss issues relating to finance, infrastructure, faculty recruitment and the matters related to the overall development of College.

The Principal is assisted by the Teachers-in-Charge (TIC) of the Departments, the Staff Council (all teaching faculty) and the Non-Teaching Staff which comprises of the Administrative Officer, Section Officers (one for Accounts Office and one for the General Administration), Senior and Junior Office Assistants and manual staff. College Development Council meetings are held at least twice every semester for the effective planning and implementation of programs like teaching, learning, academic administration, curricular and extracurricular activities.

The College also has an **Internal Quality Assurance Cell (IQAC)** which works towards realization of the goals of quality enhancement and sustenance. The IQAC plays an important role for monitoring the internal quality of the institution.

Student Council meetings are held regularly to address the student related issues and organize extracurricular activities through various Committees.

The **Library organization** includes Librarian, Assistant Librarian, Library clerks and library attendants.

Various committees are constituted for the planning, preparation and execution of academic, administrative and extra-curricular purposes. Each committee consists of the Incharge and its members.

Procedure of Recruitment – (I) Teaching Staff

- Letter to Management for Sanction the teaching and non-teaching staff as per pattern
- Letter of management for Draft of Advertisement
- Advertisement in National paper for requirement of staff
- Application form Scrutiny, interview by the Principal
- Appointment, Approval

Plot No. 89, Near General Kariappa Bridge,
Rajendra Nagar, Borivali (East), Mumbai - 400 066





SUMAN EDUCATION SOCIETY'S

LN COLLEGE (Night)

(Affiliated to the University of Mumbai)

H. D. Gaonkar Vidya Sankul, Suman Education Society Campus, Plot No. 89, Near General Kariappa Bridge, Rajendra Nagar, Borivali (East), Mumbai - 400 066, Maharashtra (India)

II) Procedure of Recruitment – (II) Non Teaching Staff

- Advertisement at local level
- Selection by management committee
- Appointment Approval by management

The institutional Strategic / Perspective plan is effectively deployed

Yes, The institutional perspective plan aligns with the vision and mission of the institution which are the constant driving factors for improving academic quality policies and strategies.

At the beginning of the academic year, various bodies and committees that constitute the Organogram of the institution, chalk out the strategic plan of events and activities which will support the growth and development in these key areas and at the end of the year, a review is taken about implementation and the outcomes of the perspective plans. One such broad area in which the Institutional Perspective and Strategic Plan has been successfully implemented is that of Teaching, Learning and Research.

Reeta A. Dhanu

I/C Principal
LN College

Plot No. 89, Near General Kariappa Bridge,
Rajendra Nagar, Borivali (East), Mumbai - 400 066

